



chieftainfabrics



Trimcell



Crib 1



Stain Resistant



Easy Clean



Warranty



chieftainfabrics

Trimcell

Composition: Surface: PVC
Backing: PES or Cotton/PES

Total Weight: 608g/m²

Thickness: 1.00mm

Bursting Strength: 1,000+kPa

Printwear Resistance: 4-5 Grayscale

Abrasion: 40,000+ Martindale rubs

Roll Length: 30m

Roll Width: 137-139cm

Flame Retardancy: S.I. 1988 No. 1324 Schedule 4 and 5
BS EN1021-1 and 2
CS-25
FMVSS 302
IMO A 652 (16)

Care and Cleaning Guide

Chieftain Fabrics vinyl should be cleaned regularly. Oil and ink must be removed immediately. Clean with warm, mild soapy water and a micro-fibre cloth or a soft hand brush and dry immediately. Please, do not use solvents, chloride, abrasives, chemical cleaning agents or wax polishes. Note that colourings by jeans or other textiles are excluded from any manufacturer's guarantee. In situations requiring a high level of disinfection, use a 1:4 bleach to cold water dilution. Always follow manufacturer safety guidelines and wear appropriate PPE.

For further cleaning information, please see our 'Wash and Care' section at www.chieftainfabrics.com

Chieftain Fabrics
Chieftain Fabrics
Wellington Place
Trim
Ireland
C15 W248

Tel: 00353 46 943 1396
Fax: 00353 46 943 7669

UK Freephone: 0800 0355 955
UK Fax: 0845 8622 046

marketing@chieftainfabrics.com
www.chieftainfabrics.com

Disclaimer

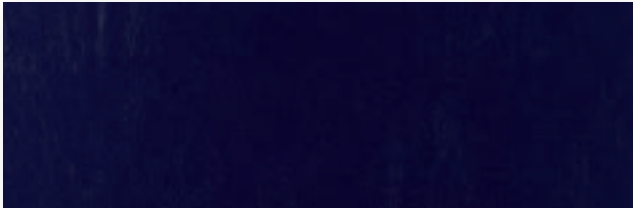
Batch-to-batch variations in shade may occur within commercial tolerances. We reserve the right to alter technical specifications without notice. The Unregistered Design Rights and the Copyright in all designs are the exclusive property of Chieftain Fabrics. For more information please visit our website www.chieftainfabrics.com



CLASSIC



Dove



Ink



Snow White



Burgundy

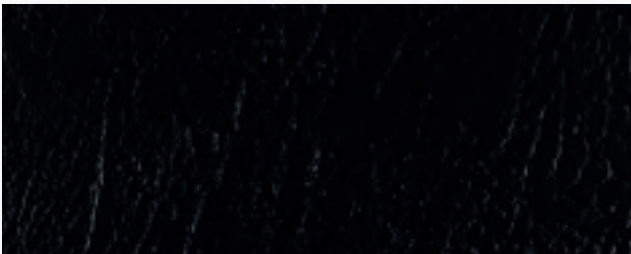


Brown

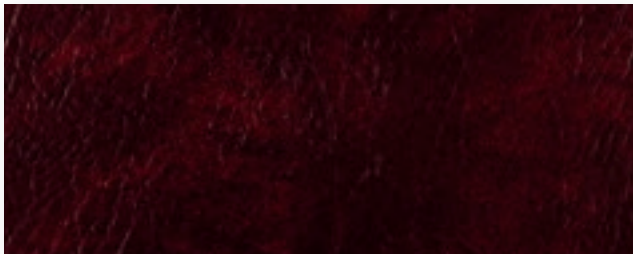


Black

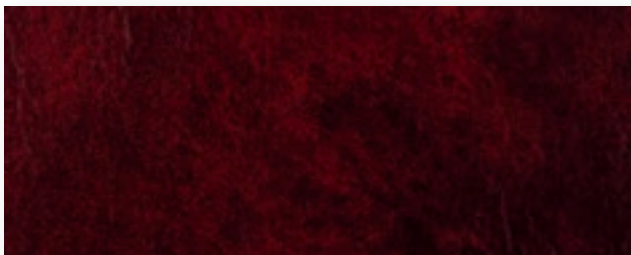
LEGEND



Buffalo



Oporto



Burgundy



Indigo



Briar



Antelope

LEGEND



Iris



Poppy



Dahlia



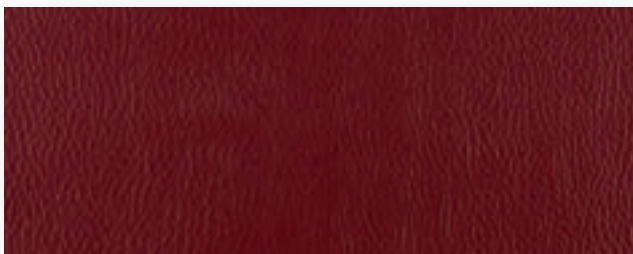
Fern



Daisy



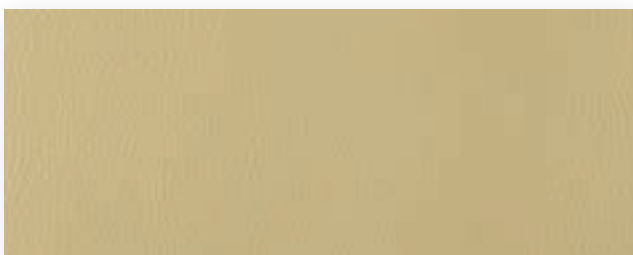
Bluebell



Garnet



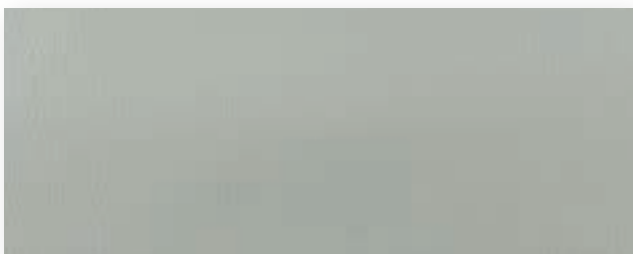
Cinnamon



Truffle



Navy



Grey



Charcoal