



# Pasha

Faux Leather



# Pasha

## Faux Leather

**Composition:** Surface: Phthalate Free PVC: 88% PU: 12%  
Backing: Sustainable Cotton: 100%

**Total Weight:** 550 g/m2 ±25g/m2

**Thickness:** 1.10mm ± 0.1mm

**Abrasion:** 400,000 Martindale Rubs

**Roll Length:** 25 meters

**Roll Width:** 137-139 cm

**Flame Retardancy:** BS5852 Ignition Source 5 - Crib 5 as standard  
BS EN1021-1 and 2

**Antimicrobial:** ISO 22196

### Care and Cleaning Guide:

Chieftain Fabrics vinyl should be cleaned regularly. Oil and ink must be removed immediately. Clean with warm, mild soapy water and a microfibre cloth or a soft hand brush and dry immediately. Please, do not use solvents, chloride, abrasives, chemical cleaning agents or wax polishes. Note that colourings by jeans or other textiles are excluded from any manufacturer's guarantee. In situations requiring a high level of disinfection, use a 1:10 bleach to cold water dilution. Always follow manufacturer safety guidelines and wear appropriate PPE.

For further cleaning information, please see our 'Wash and Care' section at [www.chieftainfabrics.com](http://www.chieftainfabrics.com)

### Disclaimer:

Batch-to-batch variations in shade may occur within commercial tolerances. We reserve the right to alter technical specifications without notice. The Unregistered Design Rights and the Copyright in all designs are the exclusive property of Chieftain Fabrics. For more information please visit our website [www.chieftainfabrics.com](http://www.chieftainfabrics.com)

Chieftain Fabrics  
Wellington Place  
Trim  
Ireland  
C15 W248

Tel: 00353 46 943 1396  
Fax: 00353 46 943 7669

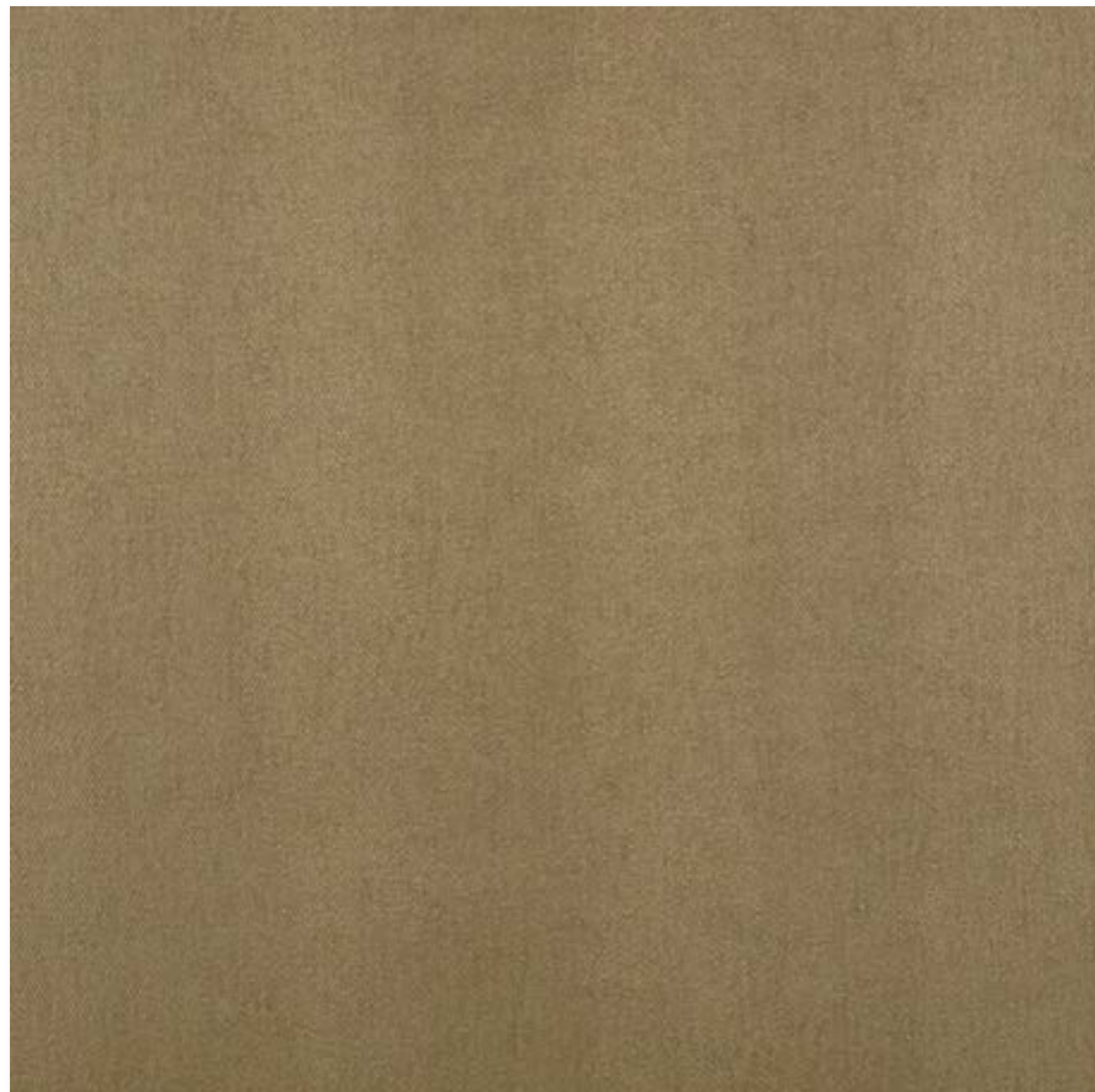
UK Freephone: 0800 0355 955  
UK Fax: 0845 8622 046

[marketing@chieftainfabrics.com](mailto:marketing@chieftainfabrics.com)  
[www.chieftainfabrics.com](http://www.chieftainfabrics.com)



# Chieftain Pasha

Soft luxurious vinyl fabric in a range of gentle complementary tones



Chablis

Pasha is a soft, lightweight addition to the Chieftain range. Its unusual grain makes it feel akin to woven linen and its soft handle and pliability make it a favourite with upholsterers.

We have taken great care in its fabrication, ensuring that only the highest quality ingredients are chosen and all dyes used in the process are organic. Chieftain has upcycled Pasha's backing cloth from 100% recycled cotton yarns, ensuring that the impact on our environment is as low as possible. ([www.chieftainfabrics/recycledcotton](http://www.chieftainfabrics/recycledcotton)).

This faux leather is also high-performance and can provide peace of mind for those who specify it for use in high-traffic areas.

Pasha's delicate colour palette and muted tones have been chosen to complement its luxurious handle.



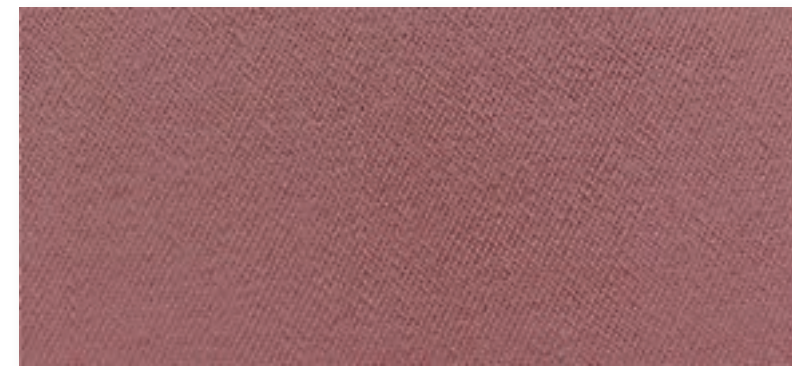
Cashmere



Night Sky



Blush



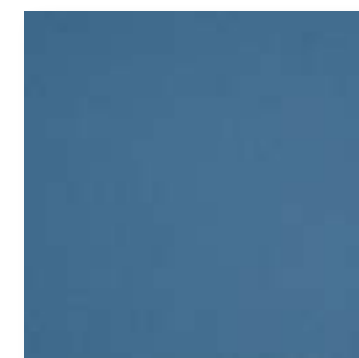
Mauve



Spice



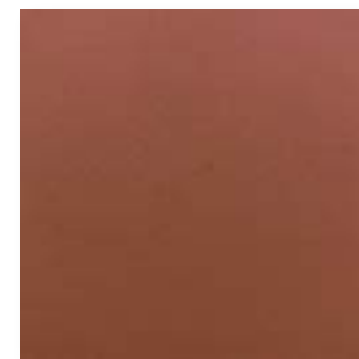
Saffron



Bunting



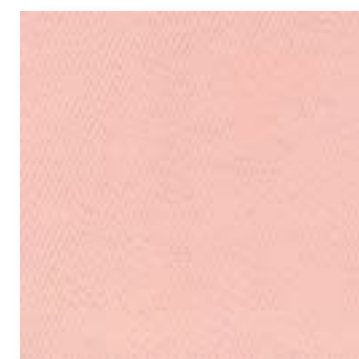
Shimmer



Cayenne



Evergreen



Posy



Mulberry



Carob