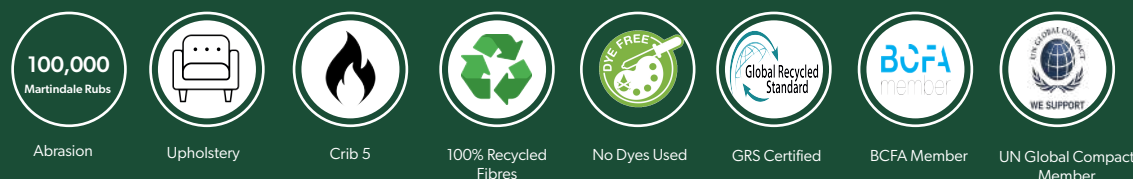


Earthly

100% GRS Certified Dye-Free Fabric



Composition: 75% Recycled Cotton, 25% Recycled Polyester

Design: Plain Weave

Total Weight: 500g/m² ± 4% per linear meter

Abrasion: 100,000 Martindale Rubs

Flame Retardancy: BS5852 Crib 5

Suitability: Contract Upholstery

Wash and Care: Earthly should be cleaned regularly. Remove spillages promptly with an absorbent dry cloth. Solid stains should be removed gently first, before being wiped with a damp cloth in a circular motion. It is essential that all residue is removed from the surface. Do not leave liquids in situ. Do not use solvents, abrasives, synthetic detergents, wax polishes or aerosol sprays.

For more information please visit our website www.chieftainfabrics.com

Disclaimer: Buying this fabric is a responsible choice. Earthly is produced with yarns that are GRS certified, which is an international voluntary standard that sets requirements for third-party certification of recycled input and chain of custody. This process allows for the re-circulation and increased use of recycled materials. The GRS certification ensures that products are processed more sustainably, impacting as little as possible on the environment as well as on the people involved in the manufacturing process. Varied texture effects, or fibres of different tones are to be considered inherent features of this type of fabric. We reserve the right to alter technical specifications without notice. The Unregistered Design Rights and the Copyright in all design are the exclusive property of Chieftain Fabrics.

Chieftain Fabrics
Wellington Place
Trim
Ireland
C15 W24

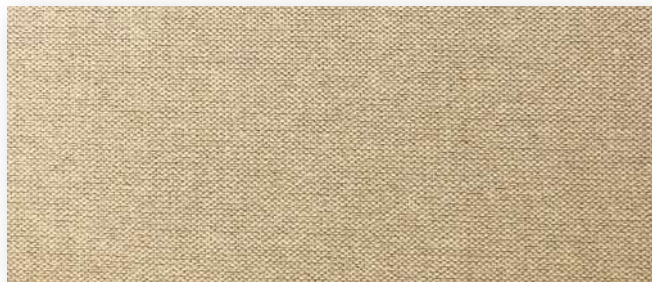
T: 00353 46 9431396
UK Freephone: 0800 0355 955

E: marketing@chieftainfabrics.com
W: www.chieftainfabrics.com





Peacock



Buttermilk



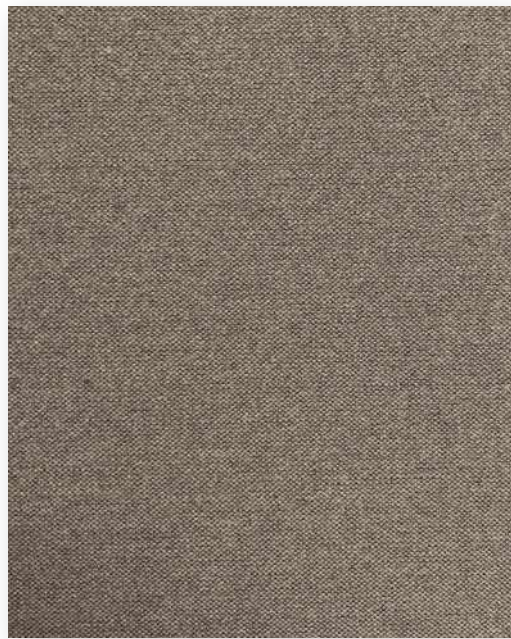
Seashore



Prune



Amethyst



Clay



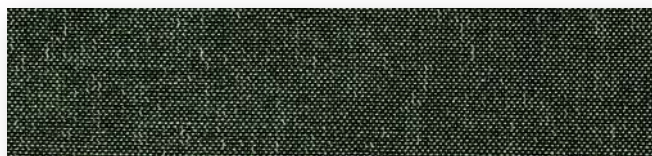
Radish



Gooseberry



Meadow Green



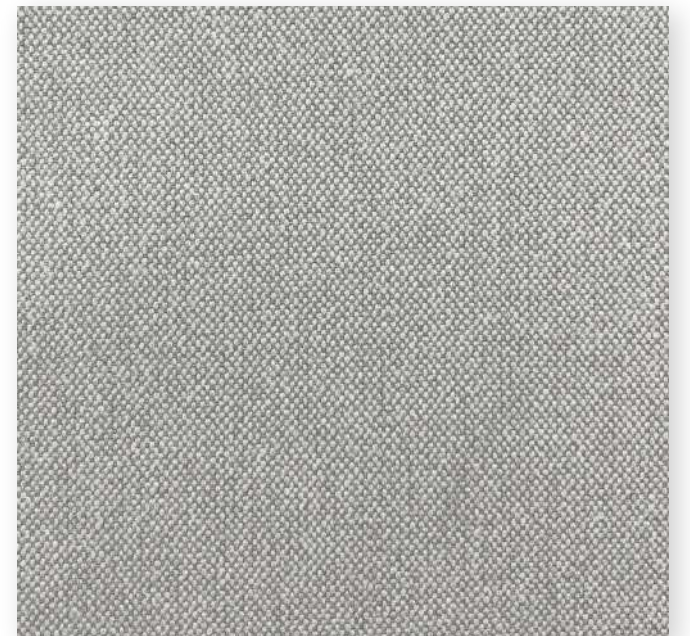
Green Ivy



Beaujolais



Storm Blue



Shale



Pomegranate



Granite



Spade



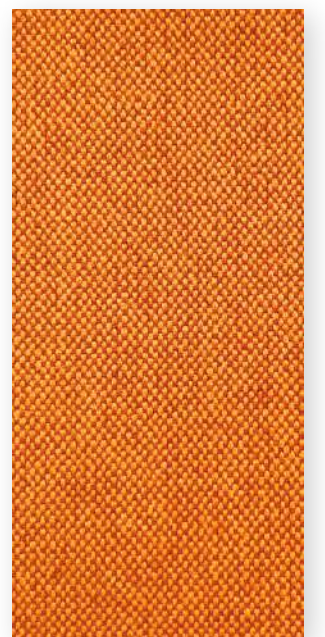
Blue Jeans



Darkest Blue



Tuscan Red



Ice Pop



chieftainfabrics



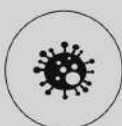
Carousel



Upholstery



Phthalate Free



Antimicrobial



Crib 5



Stain Resistant



200,000
Martindale
Rubs

Abrasion



Reduced Environmental
Impact

aqua
clean
TECHNOLOGY

Carousel

	Carousel	Just Colour	Pasha	Lionella
Composition:	100% Polyester	100% PVC	12% PU, 88%PVC	15% PU, 85%PVC
Total Weight:	520g/m ² ±	705g/m ²	550g/m ²	800g/m ²
Tensile Strength:	Warp: 893 NW Weft: 1068 NW			
Tear Strength:	Warp: 106NW Weft: 55NW			
Abrasion:	75,000	1,000,000	500,000	500,000
Stain Resistance	Aquaclean™ Technology			
Antimicrobial:	Aquaclean™ has been treated with Safefront Protec- tive shield and will not support the growth of bacteria.	ISO22196	ISO22196	ISO22196
Flame Retardancy:	BS5852 Crib 5	BS5852 Crib 5	BS5852 Crib 5	BS5852 Crib 5
Suitability:	Severe Contract	Severe Contract	Severe Contract	Severe Contract
Wash and Care Instructions:	Aquaclean™ Technology is a cleaning facilitator. This means that most stains can be removed using water only. For more persistent stains you can add neutral soap to the water to remove the stain. We do not recommend using alcohol or any other kind of abrasive, synthetic detergent, wax polish or aerosol spray for cleaning Carousel. If you are unsure about how to clean your fabric, contact us immediately.			

Disclaimer: Batch-to-batch variations in shade may occur within commercial tolerances. We reserve the right to alter technical specifications without notice. The Unregistered Design Rights and the Copyright in all designs are the exclusive property of Chieftain Fabrics.

For more information please visit our website www.chieftainfabrics.com.

Chieftain Fabrics
Wellington Place
Trim
Ireland
C15 W248

Tel: 00353 46 943 1396
Fax: 00353 46 943 7669

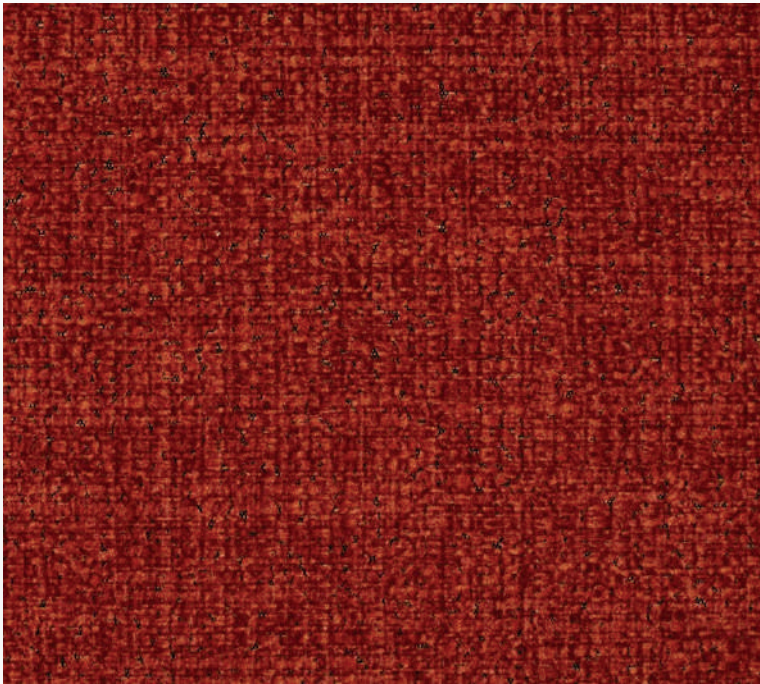
UK Freephone: 0800 0355 955
UK Fax: 0845 8622 046

marketing@chieftainfabrics.com
www.chieftainfabrics.com

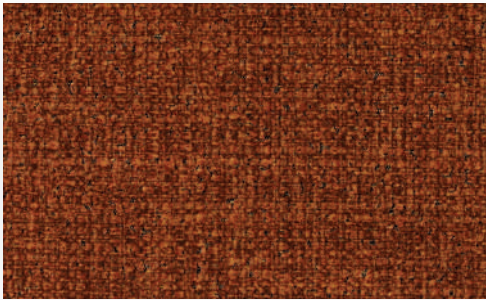


chieftainfabrics

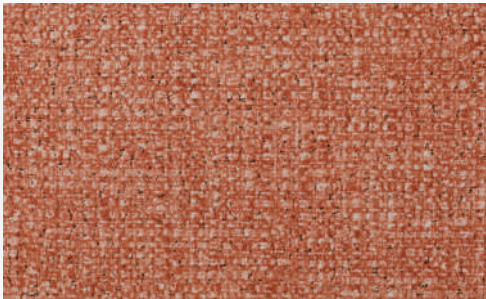




Chilli



Flame



Tawny



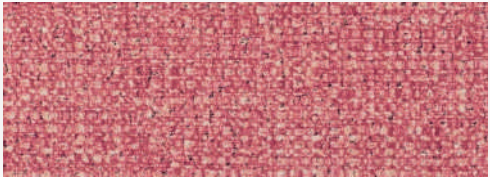
Calico



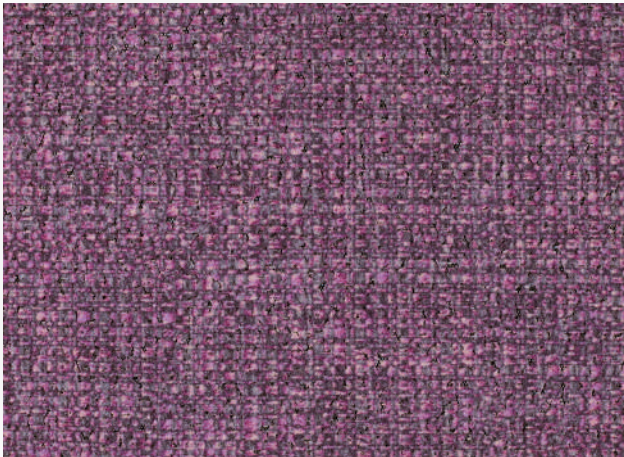
Cloak



Starlight



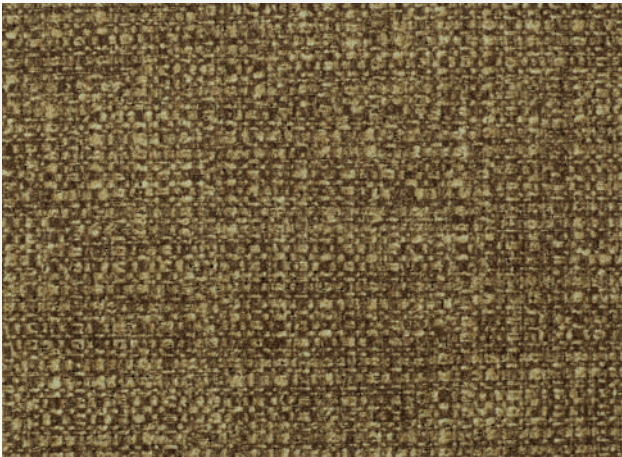
Twinkle



Ribbon



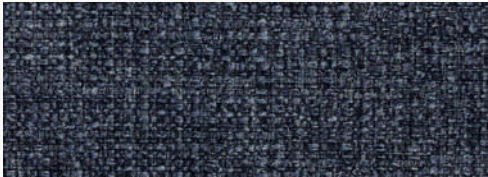
Peat



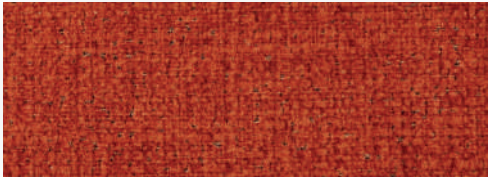
Hazel



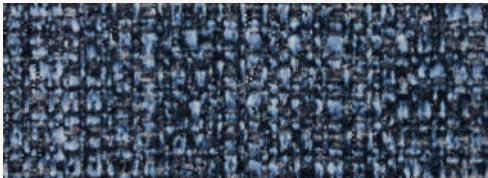
Sooty



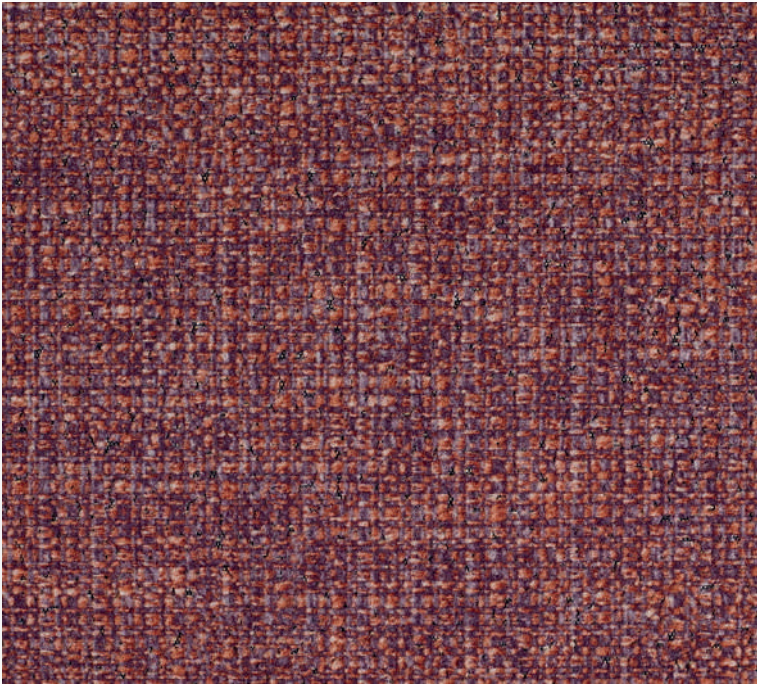
Periwinkle



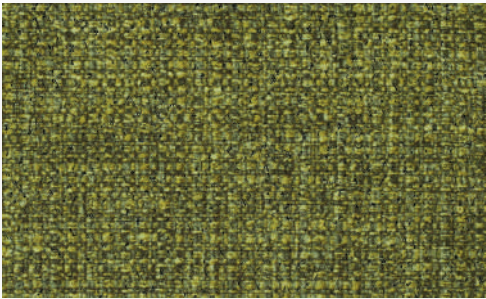
Confetti



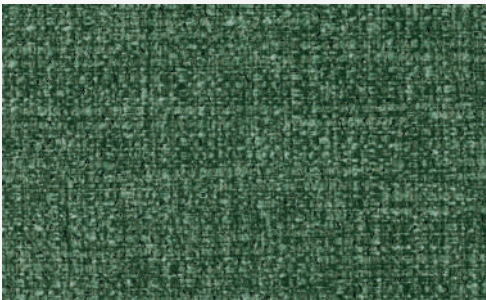
Bluebird



Somersault



Maze



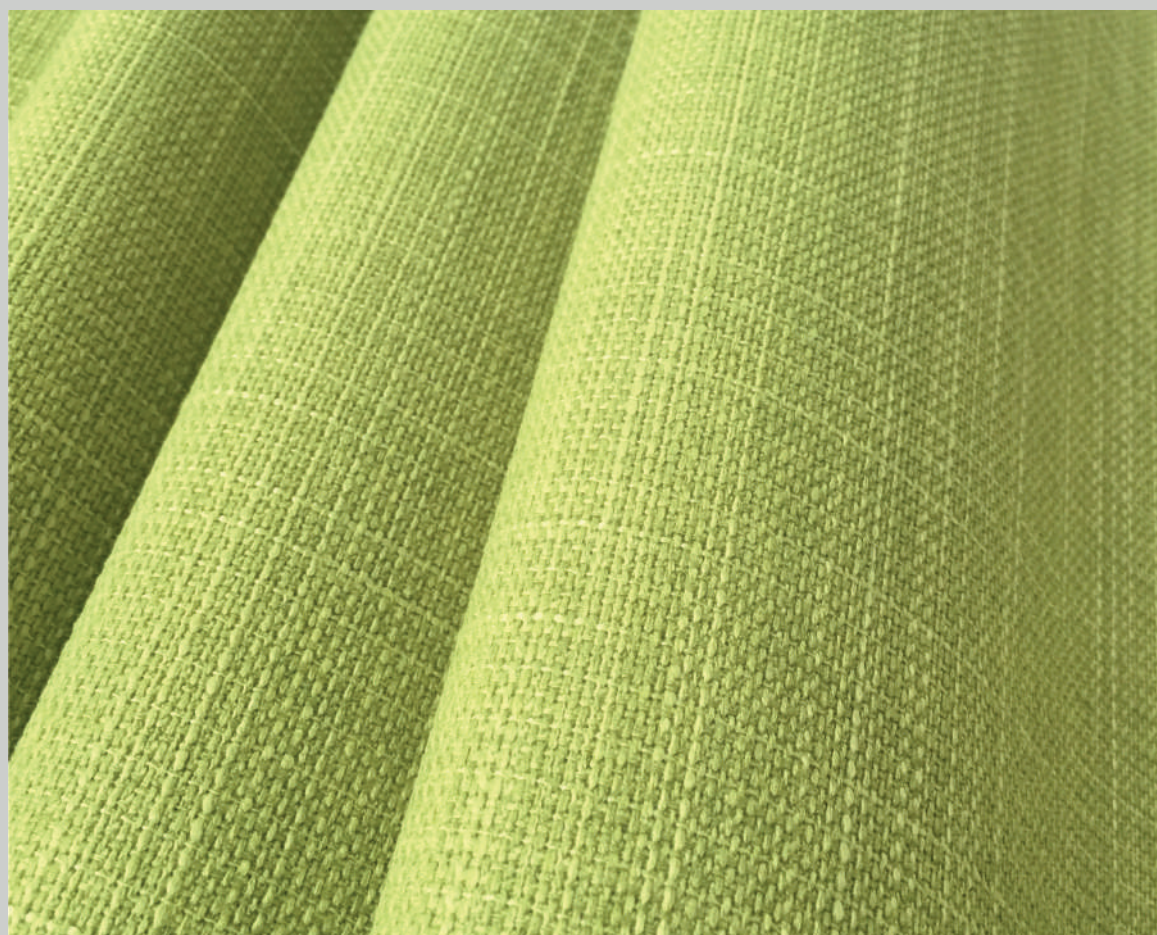
Emerald



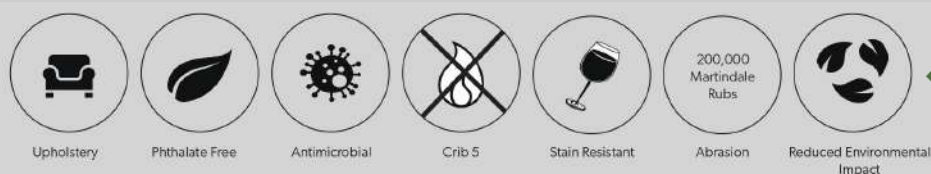
Ochre



chieftainfabrics



Ravel



chieftainfabrics

Ravel

	Ravel	Just Colour	Pasha	Lionella
Composition:	100% Polyester	100% PVC	12% PU, 88%PVC	15% PU, 85%PVC
Design:	Plain Weave			
Total Weight:	450g/m ² ±	705g/m ²	550g/m ²	800g/m ²
Tensile Strength:	Warp: 1414.3N Weft: 1038.5N			
Tear Strength:	Warp: 131.1N Weft: 133.8N			
Abrasion:	>100,000	1,000,000	500,000	500,000
Stain Resistance	Teflon Coating™			
Antimicrobial:	Will not support microbial or fungal growth including Ecoli and MRSA	ISO22196	ISO22196	ISO22196
Flame Retardancy:	BS5852 Crib 5	BS5852 Crib 5	BS5852 Crib 5	BS5852 Crib 5
Suitability:	Severe Contract	Severe Contract	Severe Contract	Severe Contract
Wash and Care Instructions:	<p>Ravel is treated with Teflon stain resistant finish.</p> <p>Ravel should be cleaned regularly. Remove spillages promptly with an absorbent dry cloth. Solid stains should be removed gently first, before being wiped with a damp cloth in a circular motion. It is essential that all residue is removed from the surface. Do not leave liquids in situ. Do not use solvents, abrasives, synthetic detergents, wax polishes or aerosol sprays.</p> <p>For more information please visit our website www.chieftainfabrics.com.</p>			
Disclaimer:	<p>Batch-to-batch variations in shade may occur within commercial tolerances. We reserve the right to alter technical specifications without notice. The Unregistered Design Rights and the Copyright in all designs are the exclusive property of Chieftain Fabrics.</p>			

For more information please visit our website www.chieftainfabrics.com.

Chieftain Fabrics
Wellington Place
Trim
Ireland
C15 W248

Tel: 00353 46 943 1396
Fax: 00353 46 943 7669

UK Freephone: 0800 0355 955
UK Fax: 0845 8622 046

marketing@chieftainfabrics.com
www.chieftainfabrics.com





Naples



Porridge



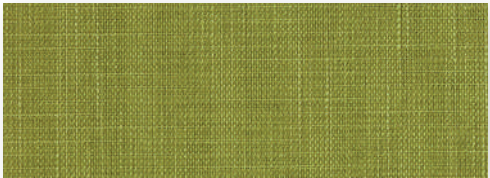
Hessian



Ganache



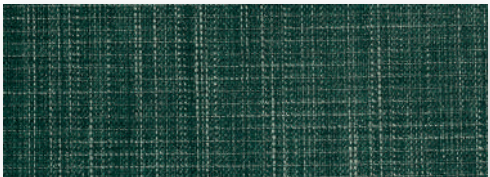
Aspen



Umami



Guacamole



Hosta



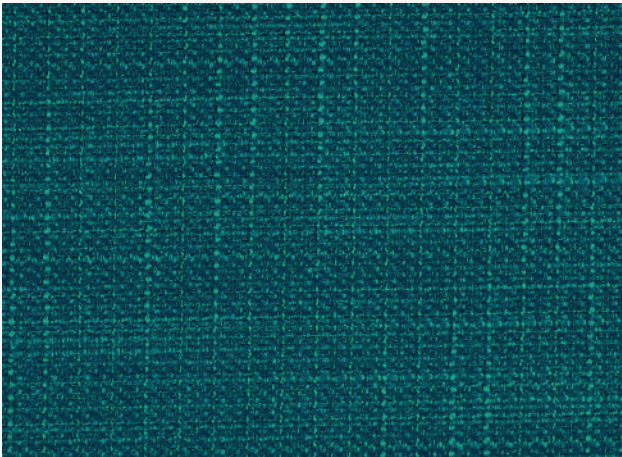
Cumin



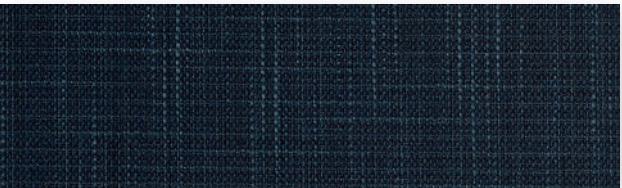
Babe



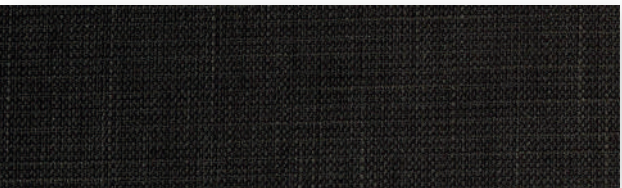
Zinc



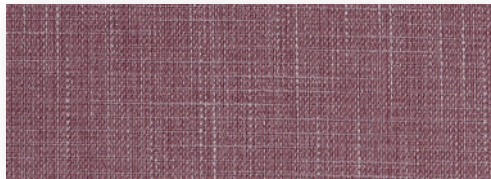
Kingfisher



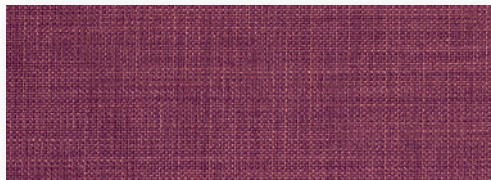
Prussian Blue



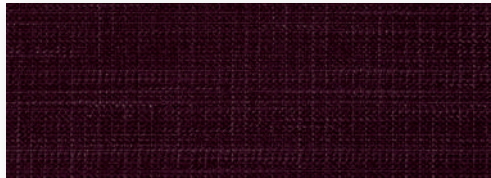
Sweep



Elderberry



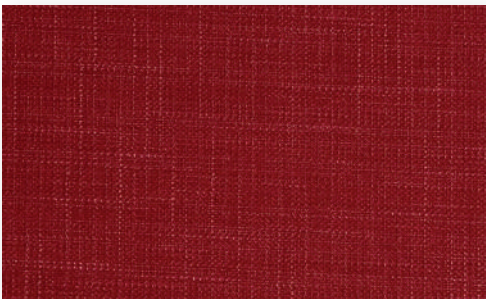
Pansy



Chianti



Fandango



Hollyberry



Tomato



Marmalade