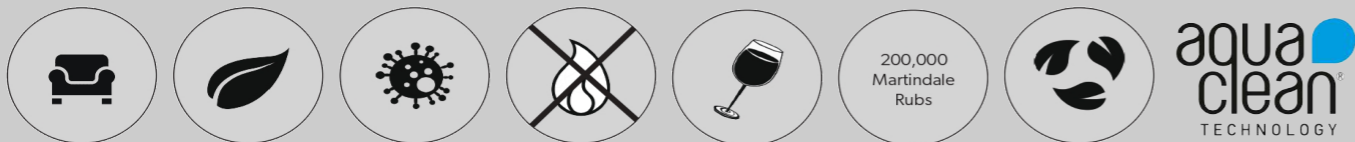




# Chieftainfabrics



## Carousel



## Chieftainfabrics

Composition:	59% Recycled Cotton, 41% PES
Total Weight:	520g/m <sup>2</sup>
Tensile Strength:	Warp: 893NW Weft: 1068NW
Tear Strenght:	Warp: 106NW Weft: 55NW
Abrasion:	200,000
Stain Resistance:	Aquaclean™ Technology
Antimicrobial:	Aquaclean™ has been treated with Safefront® Protective Shield and will not support the growth of bacteria
Flame Retardant:	BS5852 Crib 5
Suitability:	Severe Contract
Wash and Care Instructions:	Aquaclean™ Technology is a cleaning facilitator. This means that most stains can be removed using water only. For more peristant stains you can add neutral soap to the water to remove the stain. We do not recommend using alcohol or any other kind of solvent, abrasive, synthetic detergent, wax polish or aerosol spray for cleaning Carousel. If you are unsure about how to clean your fabric, contact us immediately.
	Failure to comply with our recomendations wil forefit your warranty. For more information please visit our website <a href="http://www.chieftainfabrics.com">www.chieftainfabrics.com</a>
Disclaimer:	Batch to batch variations in shade may occur within commercial tolerances. We reserve the right to alter technical specifications without notice. The Unregistered Design Rights and Copyright in all designs are the exclusive property of Chieftain Fabrics.



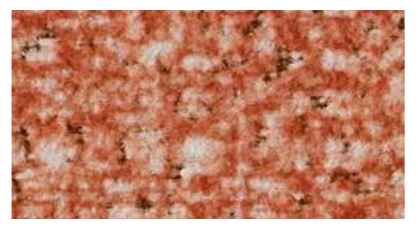
Cloak



Hazel



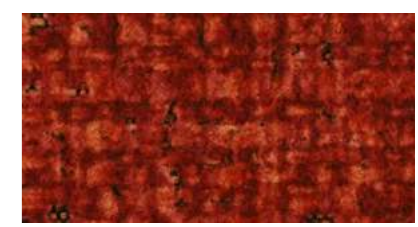
Calico



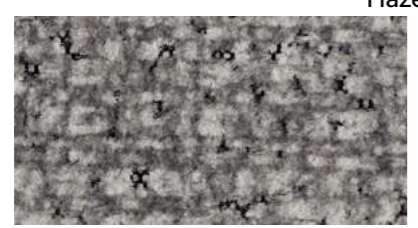
Tawny



Flame



Chilli



Starlight



Confetti



Bluebird



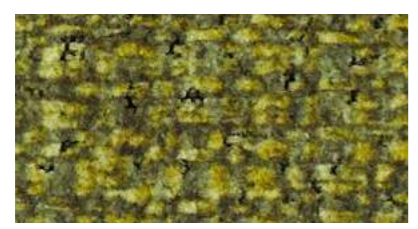
Ochre



Periwinkle



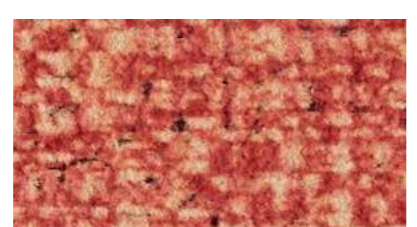
Hazel



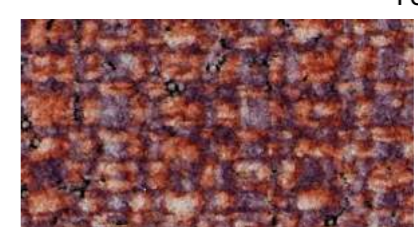
Maze



Peat



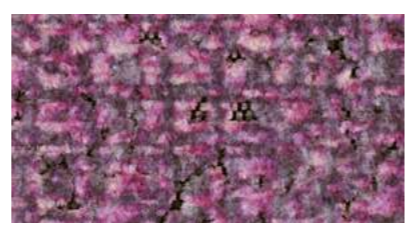
Twinkle



Somersault



Emerald



Ribbon



Chilli



Sooty

